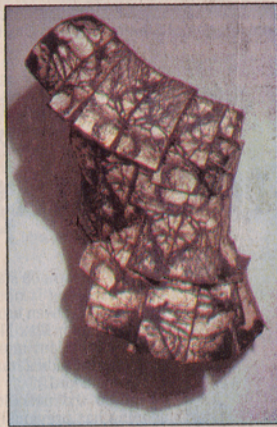


"Gunslinger" by former Louisvillian Richard Bram is at Galerie Hertz.



Louisvillian Suzanne Mitchell's "Protega" is at Zephyr Gallery.

IN FOCUS

Photography gets its due in expo's seven venues

By **DIANE HEILENMAN**
 dheilenman@courier-journal.com
 Courier-Journal Critic

The subtle separation of the visual world into art and photography gets a shakeup as the creativity and levels of illusion soar in the third Louisville Photo Expo. It starts Friday with receptions from 5 to 8 p.m. at seven galleries.

Here is an overview of the venues. Not all have regular hours. Some will be open only during the free reception or by appointment.

Artswatch

2337 Frankfort Ave.; hours by appointment, call (502) 893-9661.

Two emerging women photographers are presented in back-to-back shows, beginning with "Peace Makers: Women from Northern Ireland the Republic" by Tamara Fitzpatrick, who has worked on the series with grants from the Kentucky Foundation for Women and the Kentucky Arts Council. Her portraits are of women who dedicated their lives to "eliminating the lines that divide Catholics and Protestants."

Fitzpatrick is a photojournalist who has an interest in women's issues but also has documented such diverse international subjects as former President Bill Clinton, the Dalai Lama and the 1994 signing of the Israeli-Jordanian peace treaty.

Her show, which ends Aug. 15, is followed by "Carrie Burr: Redheartchickenparts" Aug. 22-30.

Erin Devine Gallery

221 N. Hancock St., 11 a.m.-6 p.m. Wednesday-Saturday.

The gallery follows past patterns and offers a glimpse of established and emerging artists in a two-show format focused on digital technology.

"Image Partners" presents works by Florida photographer Jerry Uelsmann, a well-known dark-room magician who now uses digital technology for his surreal and provocative set-ups and landscapes, and less-publicized works by his wife, Maggie Taylor.

The second show presents a national and regional mix of emerging photographers exploring an array of digital processes and possibilities that include installations and sculpture. Both shows end July 26.

Galerie Hertz

327 E. Market St., 11 a.m.-4 p.m. Thursday-Saturday.

Former Louisvillian Richard Bram returns with an exhibition of street imagery from his base in London.

"Public Shootings" is his latest series of wry and often double-edged images of found scenes in big cities.

Gallery owner Billy Hertz, who lives half of the year in Italy, said the European experience has really proved Bram's vision, with his work recently incorporated in important shows in Mexico, France and Germany.

"Richard is making good," said Hertz, who thinks a large part of the reason is that in Europe artists and photographers are accepted as "true professionals" rather than subtly considered creative types at play. The exhibit ends Aug. 9.

LAVA House

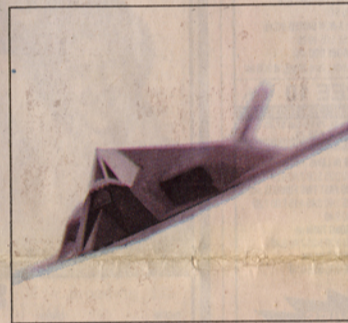
927 Shelby Parkway; hours are by appointment, call (502) 638-0066.

The title says it all. "The Element of Surprise" features works by five younger artists including several that work in the Louisville Assembly of Vanguard Art studio complex. It ends July 26.

See PHOTOGRAPHY Page 4, col. 1, this section



"Bajada" by Kirk Gittings of New Mexico is on display at Paul Paletti Gallery.



This untitled digital inkjet print was taken by Virgil Henle.



Russel Hulsey's "Endless Nameless" is at Swanson Reed.



This untitled chromogenic color print is by Amanda Betz.



Tamara Fitzpatrick's "Angels" is in "Peace Makers" at Artswatch.

Photography gets its due

Continued from Page I-1

Paul Paletti Gallery

713 E. Market St., 9 a.m.-5 p.m. Monday-Friday.

Architectural and commercial photographer Kirk Gittings of New Mexico is noted for his love affair with the cultural landscape, especially the mysterious spirituality of the ruins of Chaco Canyon, a "lost" American Indian culture. His works are on view only on Thursday and Friday, followed by photogravure images created by Paul Taylor's Renaissance Press, a New Hampshire fine-art atelier that specializes in turn-of-the-century processes in collaboration with artists and photographers. It is open July 1-Sept. 30.

Swanson Reed Contemporary

638 E. Market St., 11 a.m.-6 p.m. Wednesday-Saturday.

Video is the focus with a two-part show that begins with life-size back-lit projections by Russel Hulsey of Louisville. New works include a tribute to his grandfather that is a meditation on the flicker of a single life and a pas de deux, "Endless Nameless," that uses the slow motion of a simply dressed couple moving around each other to suggest emotional states. It ends July 26.

The next show is a sculptural video by Valerie Sullivan Fuchs of Louisville. It is July 31-Aug. 30.

Zephyr Gallery

610 E. Market St., 11 a.m.-6 p.m. Wednesday-Saturday.

That photography is a means and not always the single end of a focused lens is one of the points made in "What Are They Building in There?" The works of 11 national and local artists, including Louisvillians Melissa Wilson, Suzanne Mitchell and Neil Norman, are a mix of methodologies, from elaborate set-ups that the photographer documents to books, environments, found photo assemblages and images of signs that the artist alters for art. It ends Aug. 30.

If you go ...

There will be trolley service among the galleries with receptions Friday from 5 to 8 p.m. This event replaces the July 4 First Friday gallery openings and TARC trolley service will continue on Aug. 1.